

Manual Track&Field-tablet



Version: 2016 v1



TimeTronics NV
Lammerdries-Oost 23B
B-2250 Olen, Belgium

www.timetronics.be - info@timetronics.be

Preface

Welcome to the *AthleticsManager* Track&Field-tablet user manual.

We recommend you to first gently leaf through the manual, to get an initial idea on how this document is structured. This is because it is impossible to explain every detail at the same time.

The included pictures and screenshots serve as examples and may differ from the user interface of your version of *AthleticsManager* Track&Field-tablet. Inform yourself before buying one of our products.

AthleticsManager's Track&Field-tablets functionality is extended by the software products [PostgreSQL](#) and [LibreOffice](#), property of [PostgreSQL Global Development Group](#) and [The Document Foundation](#) respectively. *AthleticsManager* uses icons of the [Silk](#) and [Fugue](#) icon sets.

If, after reading this document, you still have further questions concerning the inner working or user control of this or other *TimeTronics* equipment, please contact your local *TimeTronics* distributor. This can be achieved by e-mail: info@timetronics.be, or by phone on +32 14 23 19 11. Also, if you have any comments or advice on this user manual, you may contact us through the previously given contact details.

Good luck with *AthleticsManager* Track&Field-tablets and thank you for putting your trust in *TimeTronics'* products and services.

The authors.

Index:

1.	Introduction.....	4
1.1.	Important remark	4
1.2.	Overview	4
1.3.	Track&Field-tablet	4
2.	Hardware Setup	5
2.1.	Wireless Network	5
2.2.	Track&Field-tablets.....	5
2.2.1.	Power tips.....	5
2.2.2.	Computer Network: Wireless - Wired	6
2.2.3.	Sun and Rain Protection	6
2.3.	Wireless Interface (P1010).....	6
3.	Software	6
4.	Track&Field-tablet	7
4.1.	Standard tablet actions.....	7
4.2.	Start-up Screen of Track & Field App.....	8
4.3.	Update the Track & Field App.....	8
4.4.	Track&Field-tablet Settings.....	10
4.5.	Track Events	11
4.6.	Field Events	12
4.6.1.	Field Events - General	12
4.6.2.	Field Events – Horizontal Events	13
4.6.3.	Field Events – Vertical Events.....	14

1. Introduction

1.1. Important remark

This manual explains you how to use the Track&Field-tablets. The tablet is a product on its own and does not include any other device than the tablet itself. All other mentioned products are optional items which can be purchased from TimeTronics.

1.2. Overview

AthleticsManager can receive data from other TimeTronics products, like MacFinish, Track&Field-tablets. These data are first processed, and then saved in AthleticsManager. The data can then be exported or viewed on different outputs: csv, html, and in the future on equipment like a ScoreBoard or on television screens.

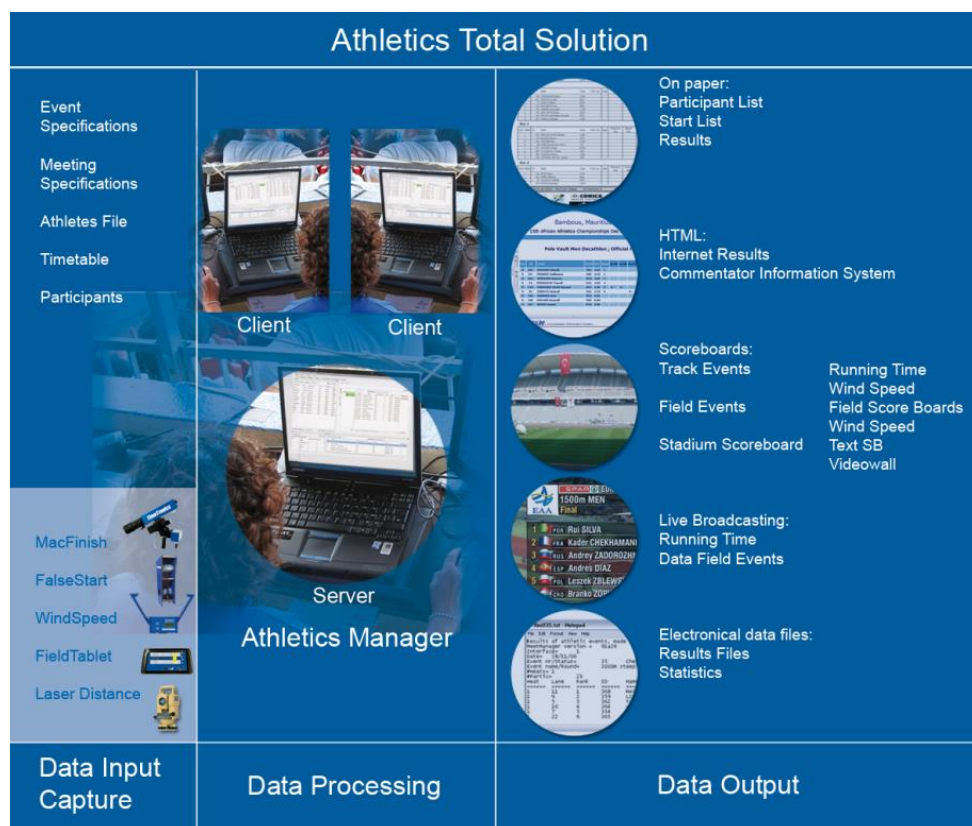


Figure: Data is being entered in input equipment (left), then processed by AthleticsManager (center) and next exported to output equipment (right).

1.3. Track&Field-tablet

AthleticsManager Track&Field-tablets are the tablets used in the spot to have an update of the participant list of each event, for both Track and Field events.

Main Track event functionalities:

- Up-to-date start list for the starter:
 - Name of athlete
 - ID of athlete
 - Who is running in which lane
- Lane changes in the same heat can be made on the spot

- Information added on the tablet will be shared with AthleticsManager and MacFinish photofinish operator
 - DNS (Did Not Started)
 - DQ (Disqualified)
 - Custom remark
 - R162.7: false start
 - R163.3a: run out of allocated lane
 - DNF (Did Not Finish)
 - Lanes changes in the same heat
- You can see the results once entered by the MacFinish or AthleticsManager

Main Field event functionalities:

- Participant list with ID and start order
- Entering data in the AthleticsManager from the tablet:
 - Performance
 - Correction of performance
 - Entering wind measurement
 - Entering start height if applicable
- Possibility for wireless connection with TimeTronics devices:
 - Countdown
 - WindSpeed
 - Field Scoreboards
 - EDM (Electronical Distance Measurement)
- Barrage for high jump and pole vault implemented

Remark:

The Track&Field-tablets will arrive with pre-installed software. The number of tablets you can connect to your AthleticsManager server is depending on your AthleticsManager license key.

2. Hardware Setup

2.1. Wireless Network

- Predefined Wireless Network settings when receiving from TimeTronics
 - SSID = ttap
 - Password = LAMMERDRIES23
- You have 2 wireless stations (preinstalled to ttap network)
 - Router
 - Mount on a tripod and connect with fully charged battery
 - Placed in the curve of the 200m pointed to the finish line
 - Bridge
 - Mount near the finish
 - Uses Power over Ethernet (PoE), use the power adaptor which is included in the station
- Connect your AthleticsManager server computer to the network

2.2. Track&Field-tablets

2.2.1. Power tips

- Fully charge your tablets before starting your meeting
- Connect the PowerBank from the beginning to the tablet. While using, it will keep on charging your tablet so you have a completely charged tablet at all

times. When your PowerBank is empty, you can charge this while in the meantime you can continue using the tablet. The PowerBank will be charged by the time the battery of your tablet is empty, connect the PowerBank again and it will recharge the tablet battery.

- When not using the tablet, you can switch off the tablet instead of keeping it on or in sleep mode.
- Deactivate Bluetooth (you will not need to use this)
- You can adjust the brightness of the screen

2.2.2. Computer Network: Wireless - Wired

- All tablets are delivered preconfigured and will search for the ttap wireless network.
- **Wired network range: 192.168.1.x**
- **Wireless network range: 192.168.2.x**
- Admin setting:
 - Login: ubnt
 - Password: ubnt

2.2.3. Sun and Rain Protection

- The tablets are not sun and rainproof, you need to protect the tablets.
- Sun and rain protection will be available from spring 2016 as an option for the Track&Field-tablet solution

2.3. Wireless Interface (P1010)

You can connect following TimeTronics devices to the tablet by using the Wireless Interface (P1010)

- Countdown Scoreboards
- WindSpeed for Long and Triple Jump
- Display for WindSpeed of Long and Triple Jump
- Infield Scoreboards
- EDM Electronic Distance Measurement

Each Wireless Interface needs to be programmed with a unique number so you can define from the tablet to which Wireless Interface you want to communicate. Each Wireless Interface is programmed with a unique number and configured that you can use immediately when connecting to a TimeTronics Wireless Set. You have to program the Wireless Interface yourself in case you change the IP range of this set or you change the login or password.

Important note:

It is possible to connect multiple tablets to 1 Wireless Interface. If you change the SSID, login or password of the wireless set you need to change also:

- each wireless interfaces (P1010)
- each TrackAndField tablet

3. Software

Please download always the latest software version which is available on our support website: www.timetronics.be/software.html

AthleticsManager Software

- A valid licence of AthleticsManager
- Option for Track&Field-tablets has to be activated.

- This license will define how many tablets you will be able to connect

Track&Field-tablet Software

- Pre-installed on the delivered Track&Field-tablet
- You will get instructions on the tablet if an update of the Track&Field-tablet software is available.

P1112 Wireless Interface programmer cable

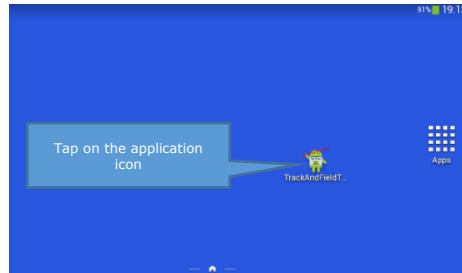
- This cable can be used to re-program the log in details of your Wireless Interface. This way you will be able to have a security protection of your wireless environment by creating a personalised log in and password for your Wireless Interface.

4. Track&Field-tablet

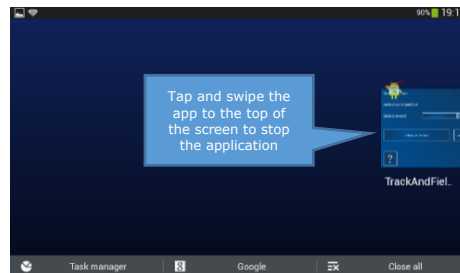
4.1. Standard tablet actions

Please note that following actions can be different depending on the tablet brand. Please consult the manual of the tablet brand you have for further explanation.

- How to start an application?



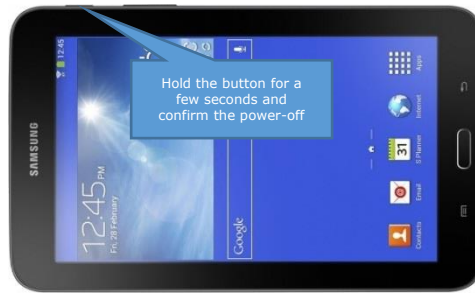
- How to stop an application?



- How to go back 1 step?



- **How to shut down a tablet?**



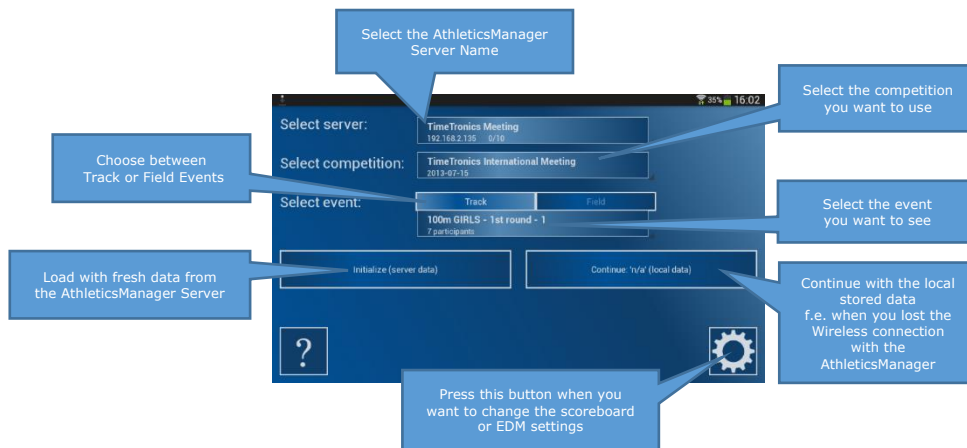
- **How to connect your tablet to the wireless network?**

Please note that the tablets are preconfigured and should be connecting to the wireless network once the wireless network is switched on.

Remark:

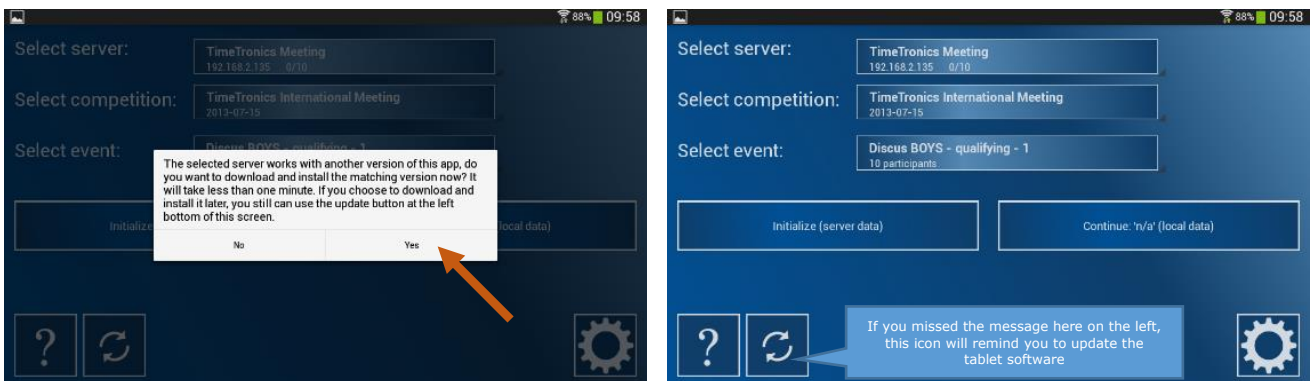
When changing the SSID, login or password you have to change this setting on each Track&Field-tablet.

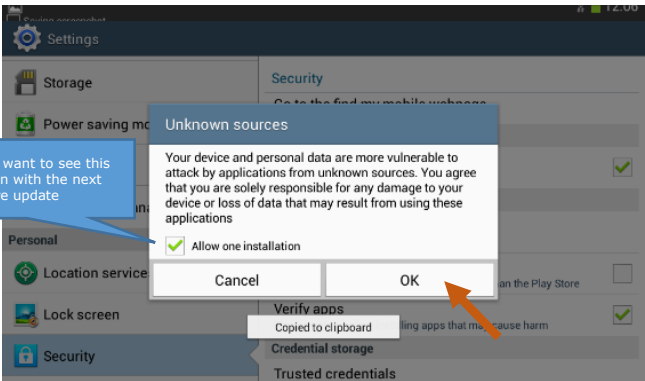
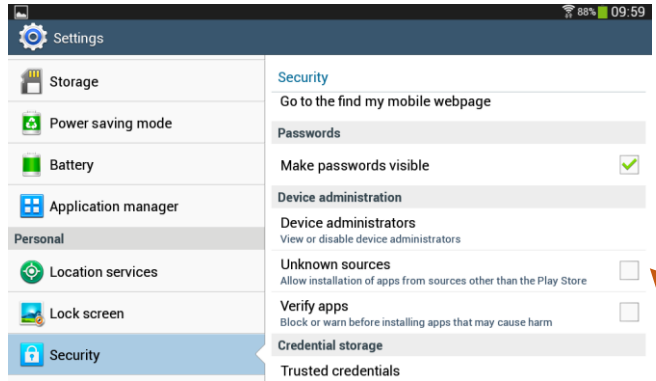
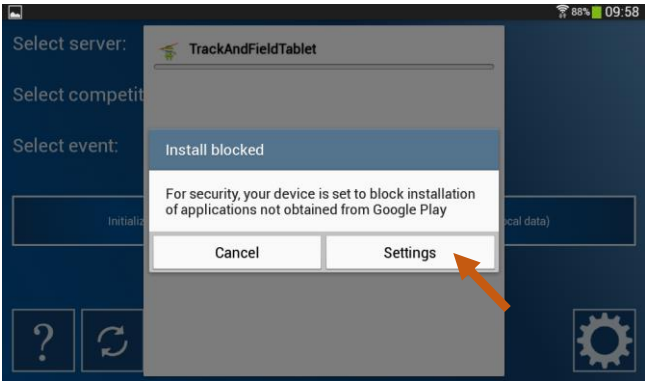
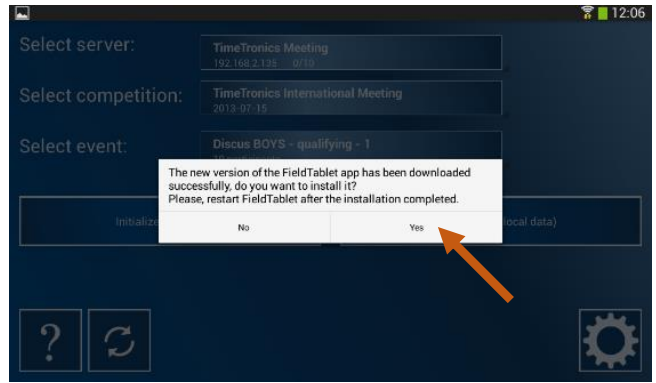
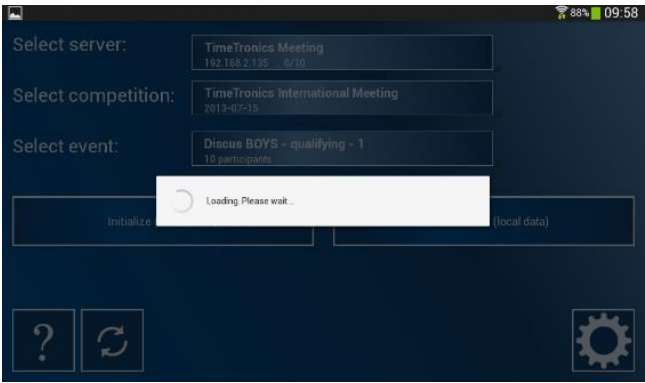
4.2. **Start-up Screen of Track & Field App**



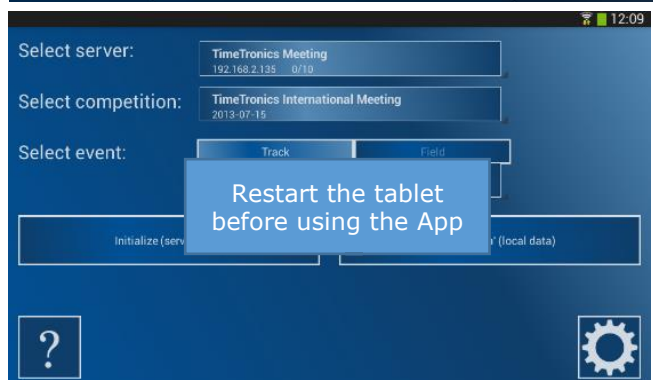
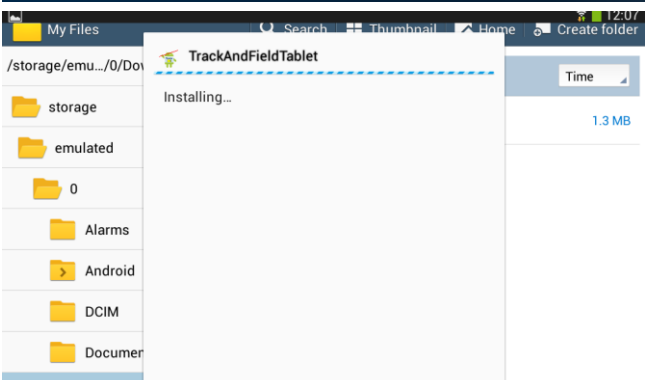
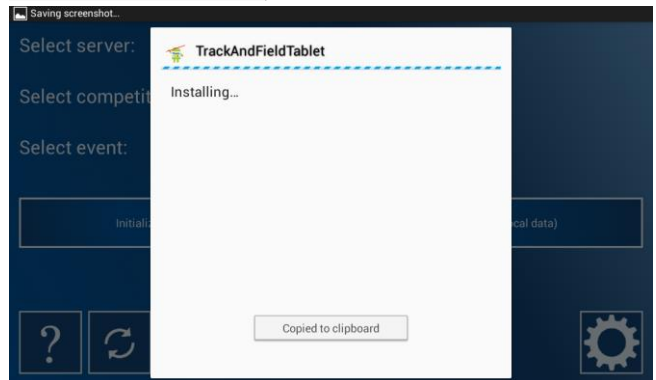
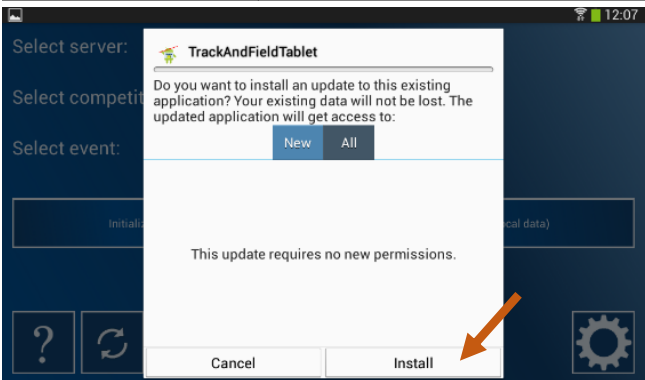
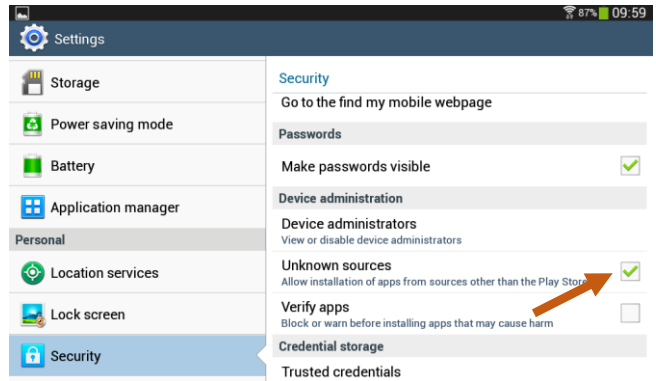
4.3. **Update the Track & Field App**

When connecting to the AthleticsManager software, the Track & Field App will look if an update is available. In case an update is available, you will get a pop up screen. In case you ignore this popup screen, then you will get the notification as indicated here below.

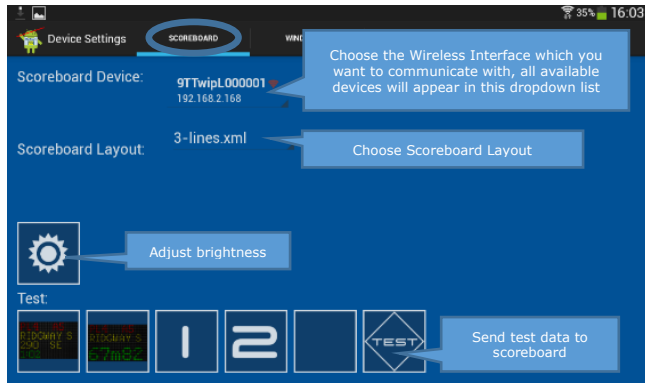
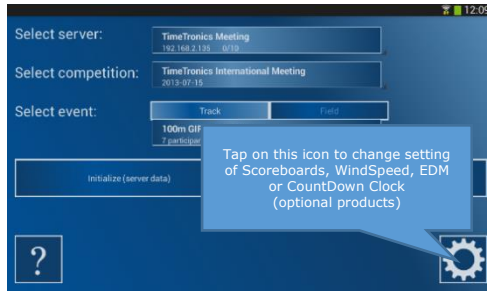




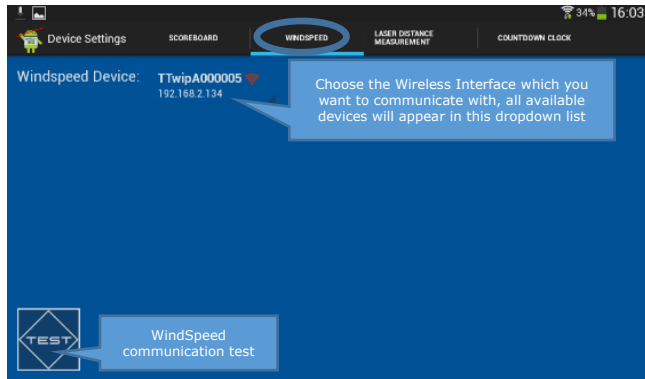
Uncheck if you want to see this message again with the next software update



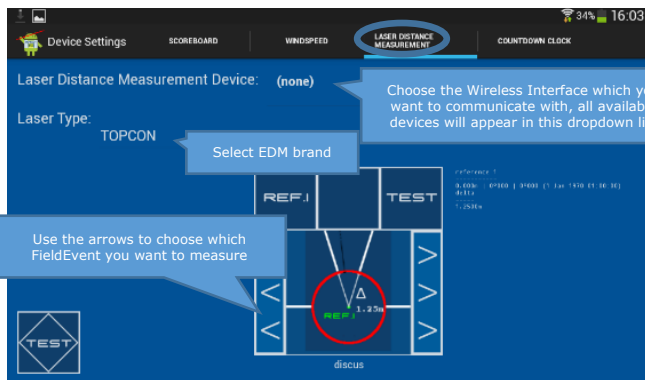
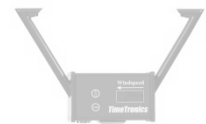
4.4. Track&Field-tablet Settings



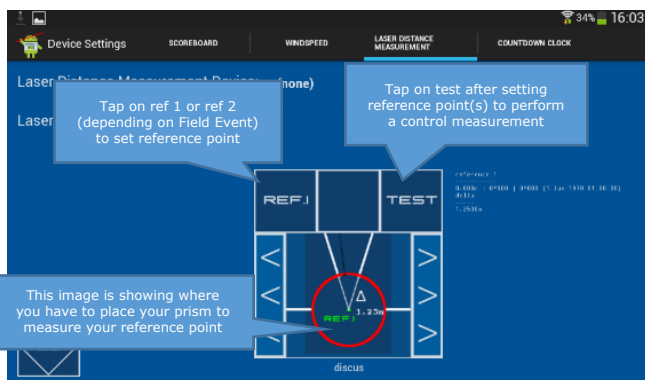
Scoreboard

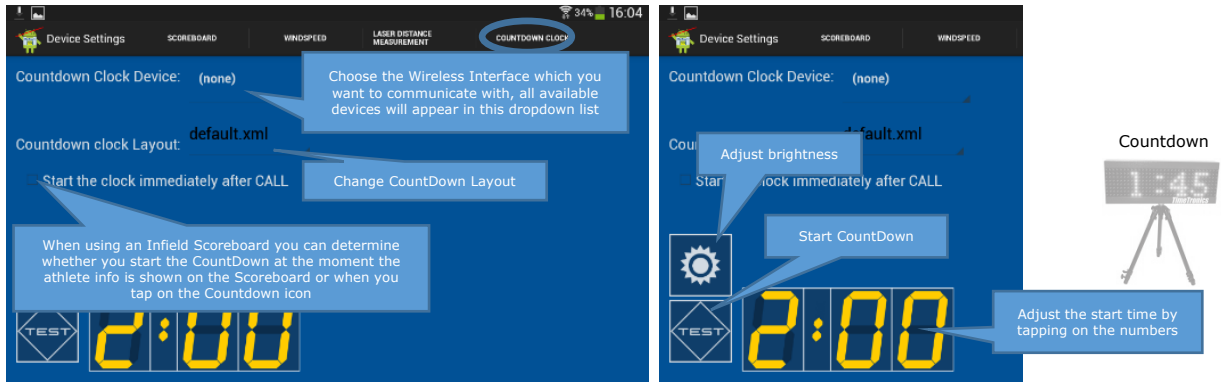


WindSpeed

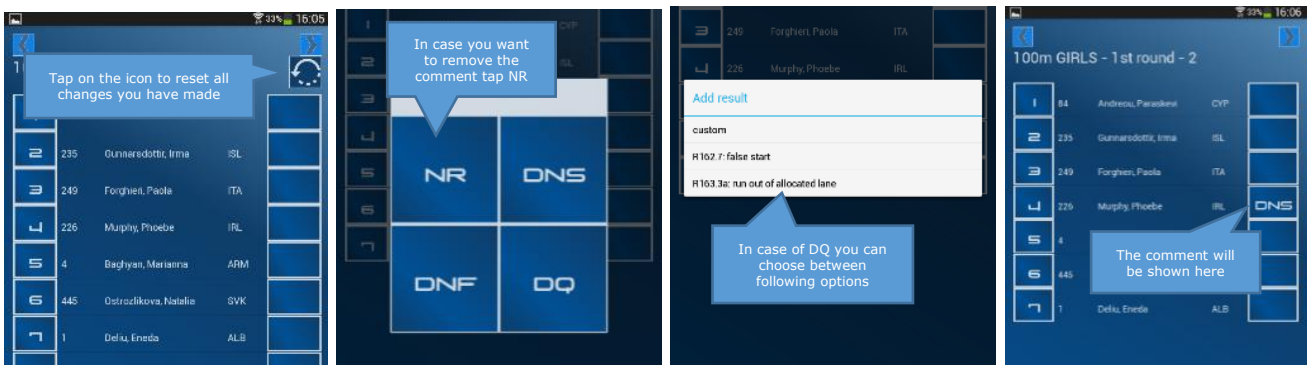
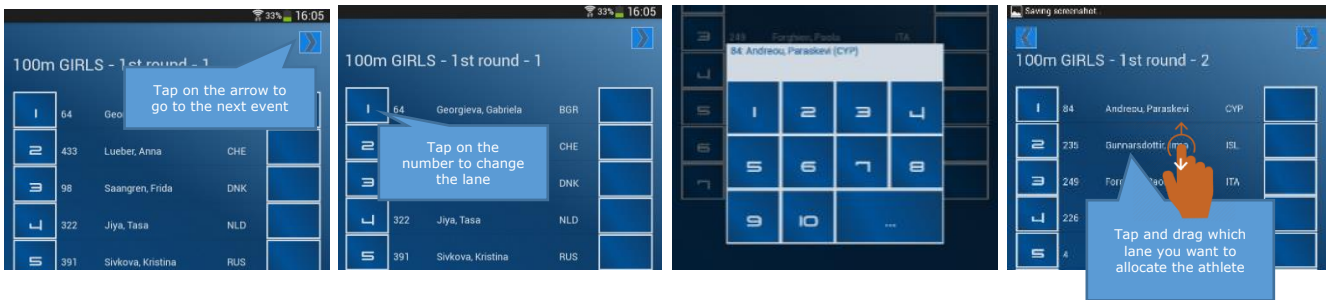
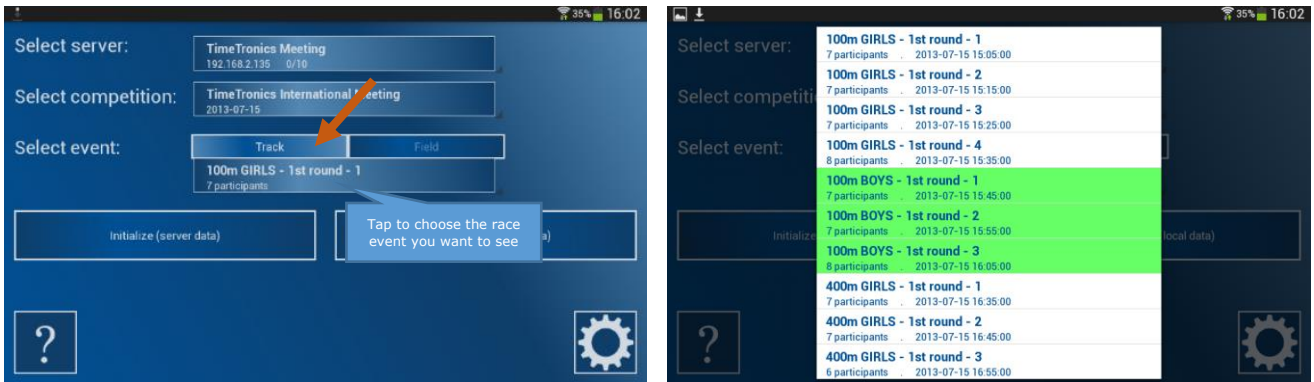


Laser distance measurement



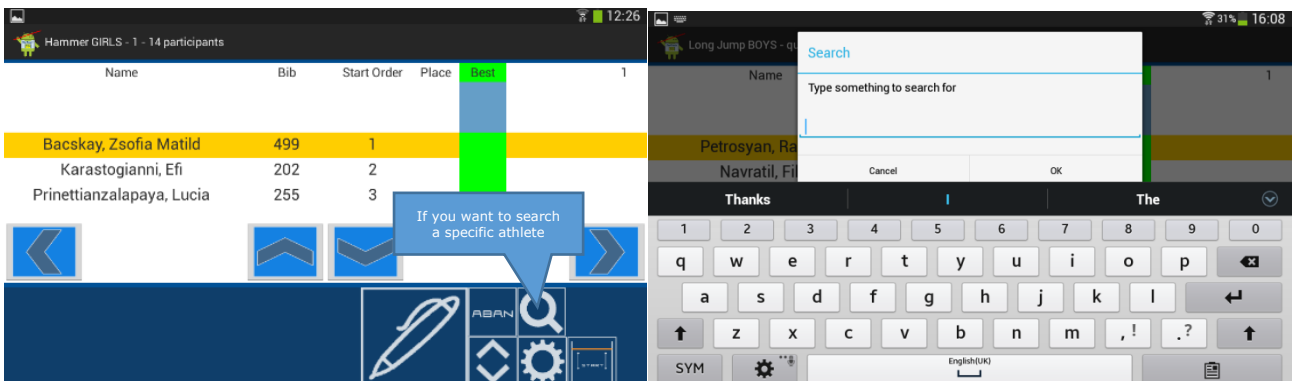
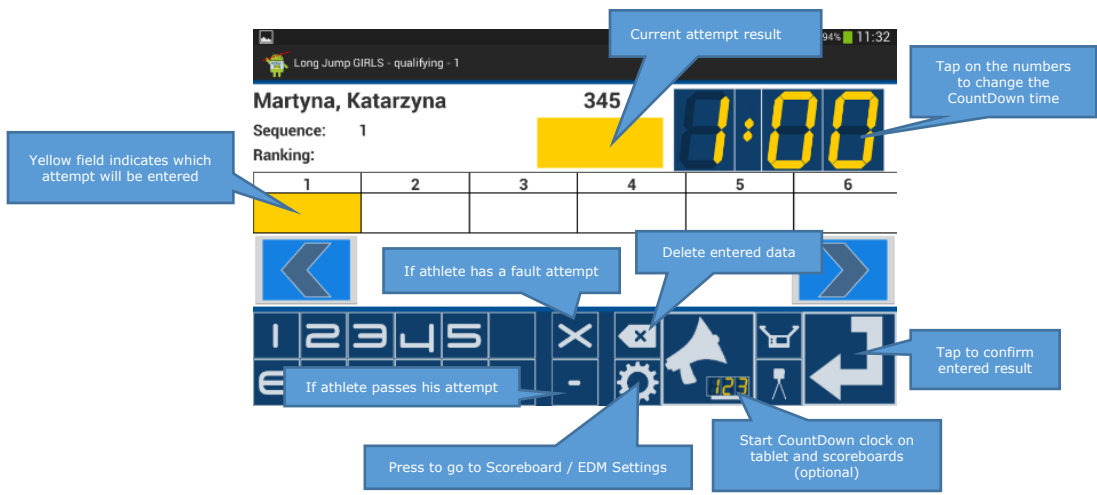
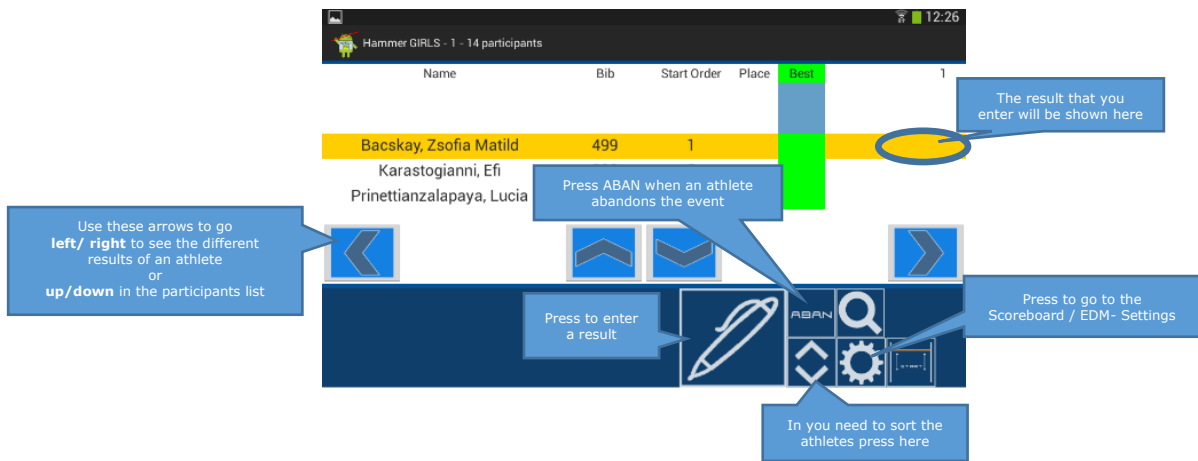
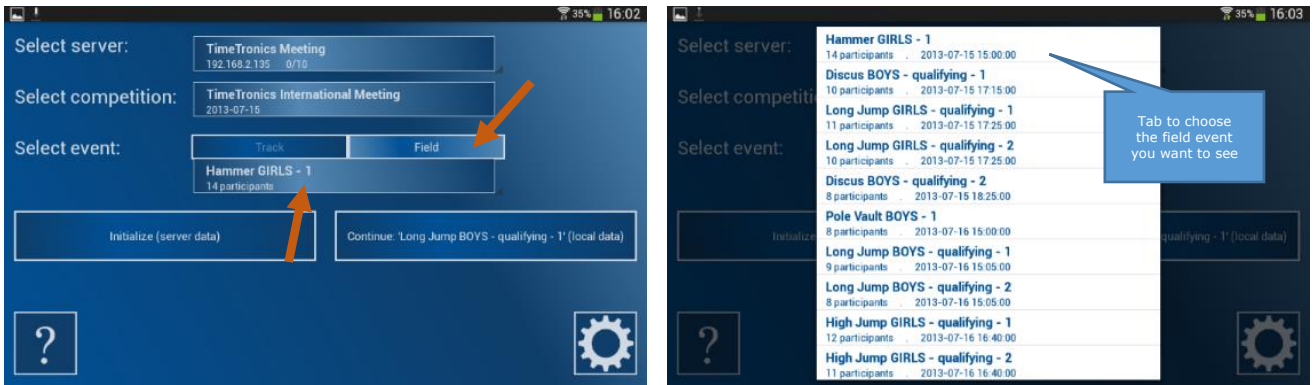


4.5. Track Events



4.6. Field Events

4.6.1. Field Events - General



4.6.2. Field Events – Horizontal Events

Long Jump GIRLS - qualifying - 1

Martyna, Katarzyna 345 1:00

Sequence: 1

Ranking:

1	2	3	4	5	6
---	---	---	---	---	---

Tap to start WindSpeed measurement (optional product)

WindSpeed

Manual windspeed result

Give a windspeed result:

OK

1 2 3

4 5 6 Done

7 8 9 -

0

If no WindSpeed is connected, you will get this field to enter the WindSpeed result manual

Double tap to enter the minus

Long Jump GIRLS - qualifying - 1

Martyna, Katarzyna 345 1:00

Sequence: 1

Ranking: 1

1	2	3	4	5	6
6.73 (+1.8)					

Option 1:
Tap to confirm entered result and to get back to overview

Option 2:
Tap and hold (you will see the background become green), and release. You will have the next athlete on the screen

Long Jump GIRLS - qualifying - 1 - 11 participants

Name	Bib	Start Order	Place	Best	
Zagainova, Diana	296	2	3	6.44	6.44
		1	1	7.12	7.12

Red color indicates that the result is not send to the AthleticsManager computer yet. Normally this will only stay 1 or 2 seconds red and disappear. When WIFI connection is lost then it will stay red, until the connection is established

Long Jump GIRLS - qualifying - 1 - 11 participants

Name	Bib	Start Order	Place	Best	
Martyna, Katarzyna	345	1	1	6.73	6.73
Zagainova, Diana	296	2	2	6.44	6.44
Canakci, Meryem	456	3			
Verlin, Kreete	135	4			
	76	5			

Red indicator is gone as confirmation that the result is send to the AthleticsManager computer

Is the next performance to enter

Long Jump GIRLS - qualifying - 1

Martyna, Katarzyna 345 1:00

Sequence: 1

Ranking:

1	2	3	4	5	6
---	---	---	---	---	---

Tap to start EDM (optional product)

Waiting for laser distance measurement...

Cancel

EDM is measuring and will fill in the distance

Laser distance measurement



4.6.3. Field Events – Vertical Events

